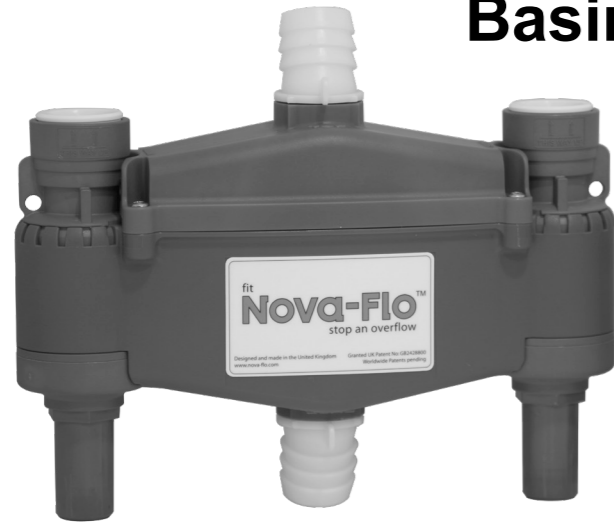


# Nova-Flo®

The flood prevention device

## Installation Instructions Basins



www.nova-flo.com

IMV150413



### Basin installation

This instruction sheet is to be used as an appendix to the Nova-Flo® Installation Instructions which cover important usage information and features.

Basins with external overflow designs may be installed with a Nova-Flo® device to prevent overflowing and excess water wastage.

**Please note that most ceramic basins which incorporate internal overflow channels are not currently suitable for Nova-Flo® installation without considerable modification and are not recommended for use in conjunction with Nova-Flo®.**

### Orientation

The Nova-Flo® unit must be fitted in a vertical orientation. It must not be fitted lying flat or crooked since this will hinder operation. Directions are clearly marked on the main body of the unit.

### Location

The unit is required to be installed as close to the overflow outlet as possible. Positioning here will allow any excess water flowing through the basin overflow outlet to pass through the Nova-Flo unit, causing activation of the valves to shut off the supply of water to the taps.

The Location of the taps has no bearing on how the Nova-Flo operates, making it suitable for virtually any tap style or location.

Nova-Flo is designed with two ear support points, which can be used in conjunction with suitable fixings to hold Nova-Flo in the correct position.

The outlet waste pipe from the Nova-Flo must feed back to a spigot on the trap assembly prior to the U-bend

The length of the 1 ½" waste extension (see Fig. 6) required will vary according to the depth of the basin or sink.

Fig. 5  
Completed basin assembly

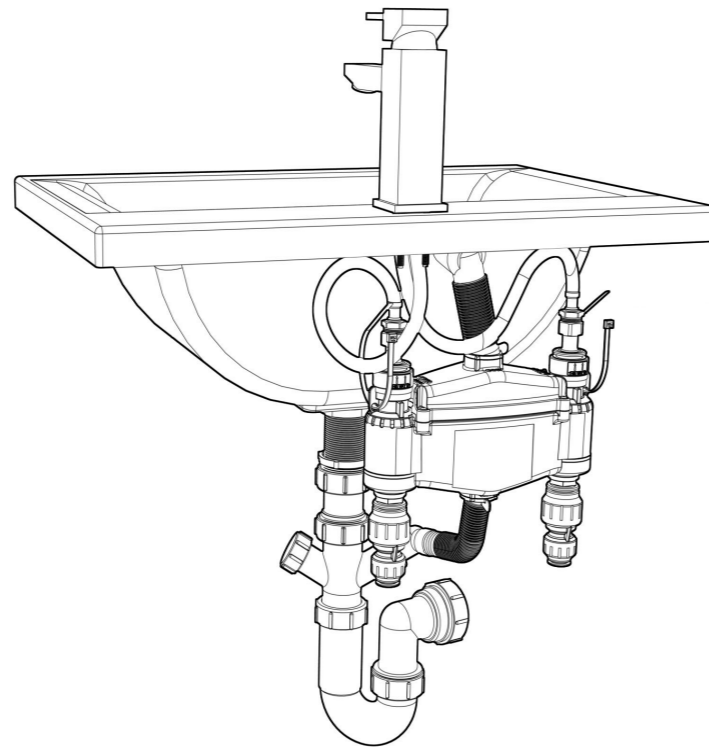
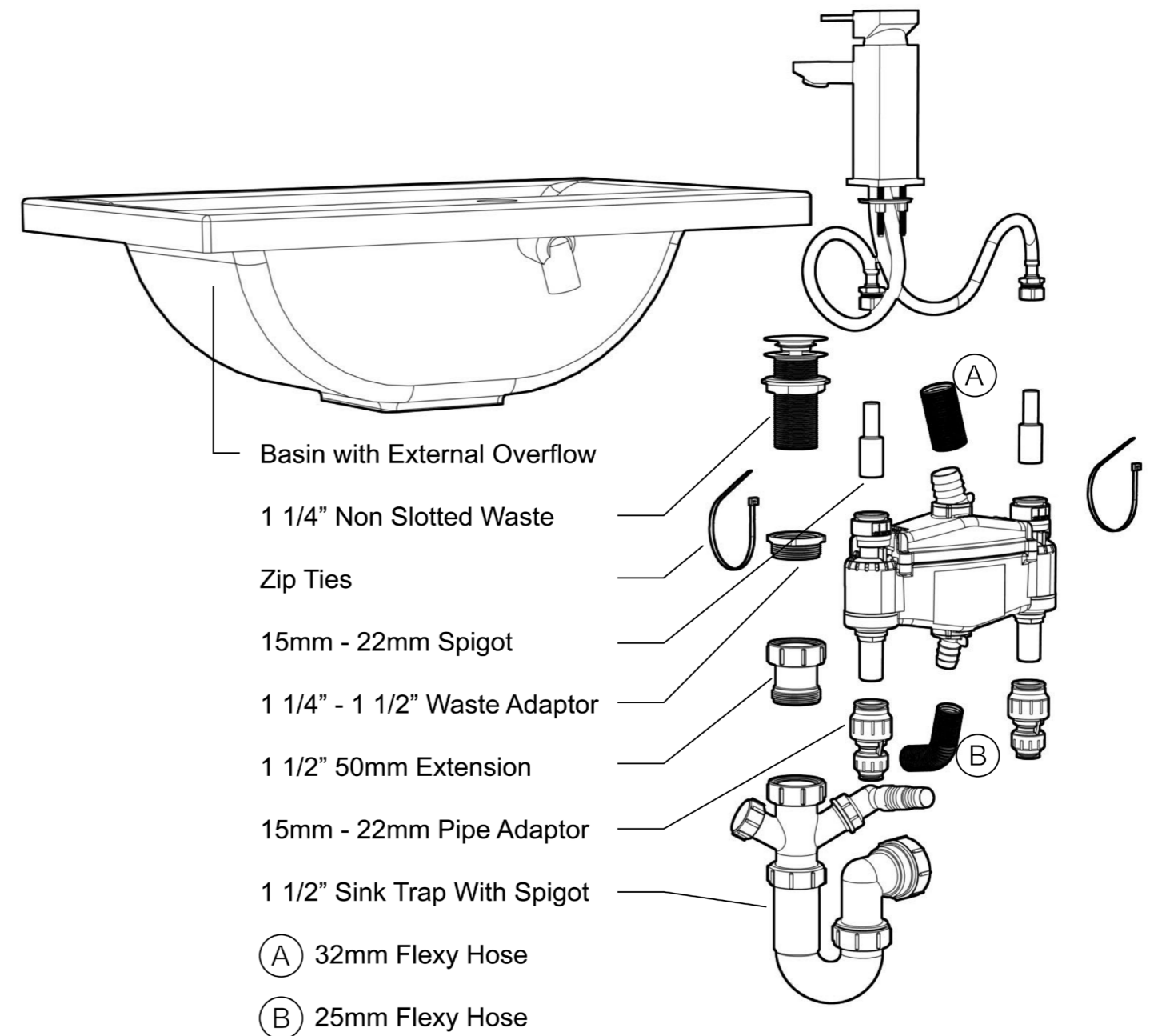


Fig. 6  
Exploded view of basin assembly



### WARNINGS

Do not put fingers into apertures or plumbing fittings on the unit as these can contain sharp edges.

Only use a pipe cutter to cut any pipe. Do not use a hacksaw as this can leave a jagged and off-square cut which will damage the plumbing fittings upon insertion and invalidate any warranty.

Do not use soldered or compression fittings or solder flux in direct contact with the unit. Care must be taken to avoid any heat transfer to the unit if soldering fittings in close proximity.

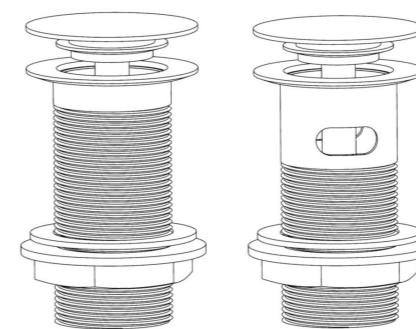
### IMPORTANT

The Nova-Flo® unit must **not** be installed under any tension.

### Please note:

We only recommend use of the John Guest® Speedfit® range of push-in plumbing fittings in conjunction with Nova-Flo®.

About Time Design Ltd (the company) and our suppliers take no responsibility for the quality of fitment of Nova-Flo® or any loss or damage caused by defective installation. We recommend installation by a qualified professional plumber to ensure there are no leaks and the device performs according to specification. The company takes no responsibility for consequential loss under any circumstances. In event of queries, in the first instance please contact us on +44 (0)1608 811 707



Non-slotted

Slotted

A non-slotted waste must be used when fitting Nova-Flo® to a basin or sink.

<b>Produced by</b> About Time Design Ltd 26 Church Street Bishops Stortford Hertfordshire CM23 2LY <b>www.nova-flo.com</b>	<b>Distributed by</b> Lifescience Products Ltd Ranger's Lodge Cornbury park Oxon OX7 3HL Tel: +44 (0)1608 811 707 Email: info@nova-flo.com
---	--

Nova-Flo and Flowban are registered trademarks of About Time Design Ltd  
Patent Protected: GB: 2428800, 2458783, 2476539, 2476351, 2476542, 2476353, 2476707, 2476540, 2476541, 2458783; Europe: 2279367; USA: 8215335 & 8517045.  
Water Regulations Advisory Scheme Limited (WRAS Ltd.) owns the WRAS Approved Product Certification Mark and reserves all rights to it.