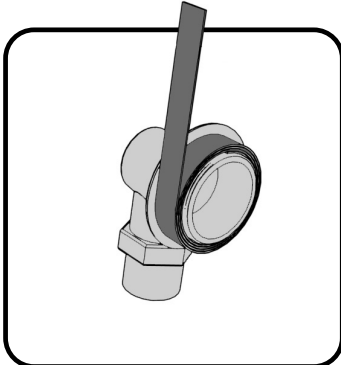


## Fitting Recommendation for Traditional Overflow Outlet



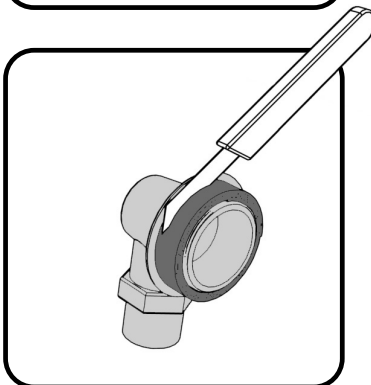
### Issue:

The hole in the bath is often far larger than the securing stub for the overflow coming through it. This can often result in inadequate sealing (shown in red) causing water to pour behind the bath when full.



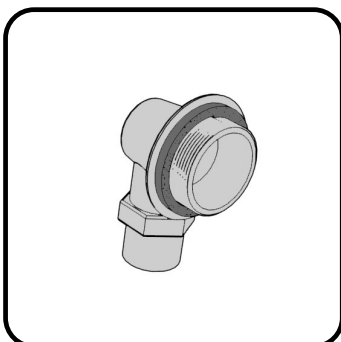
### Step 1.

Remove the overflow outlet head and wrap amalgamating rubber tape around the securing stub until the diameter of tape is equal to the diameter of the hole in the bath



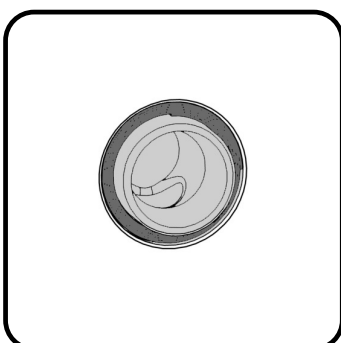
### Step 2.

Using a sharp knife, trim the tape back leaving it 1-2mm narrower than the thickness of the bath. Mind your fingers!



### Result:

This will leave you with a custom sized rubber washer which will centre the overflow outlet in the bath overflow hole permanently.



### Installation:

Cover the contact areas between the overflow and bath hole with Silicone Sealant and reassemble firmly.